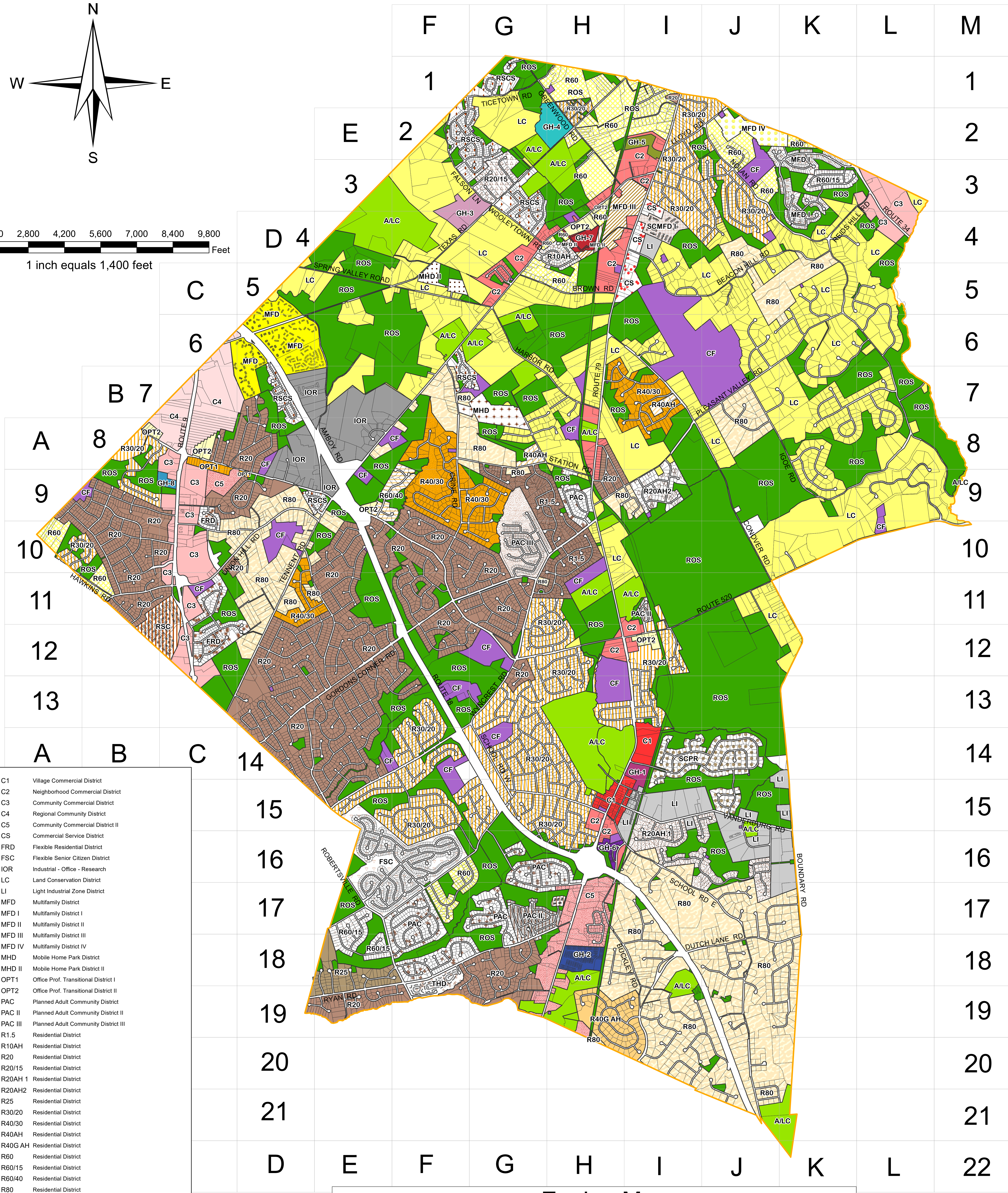
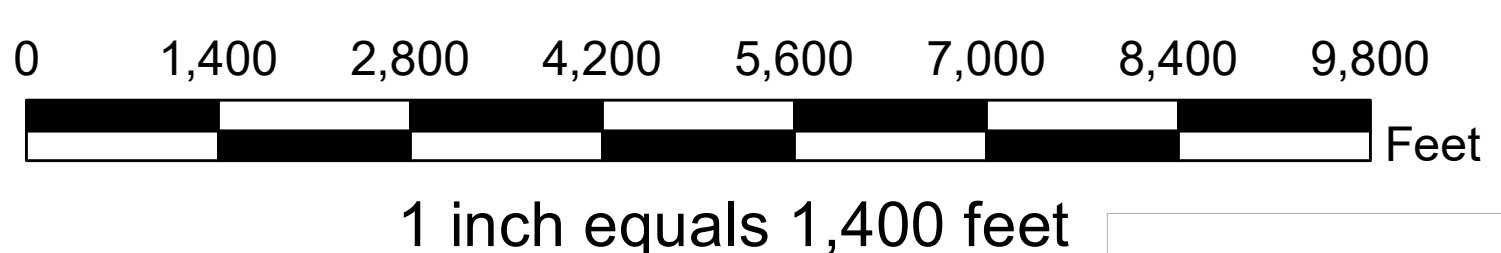
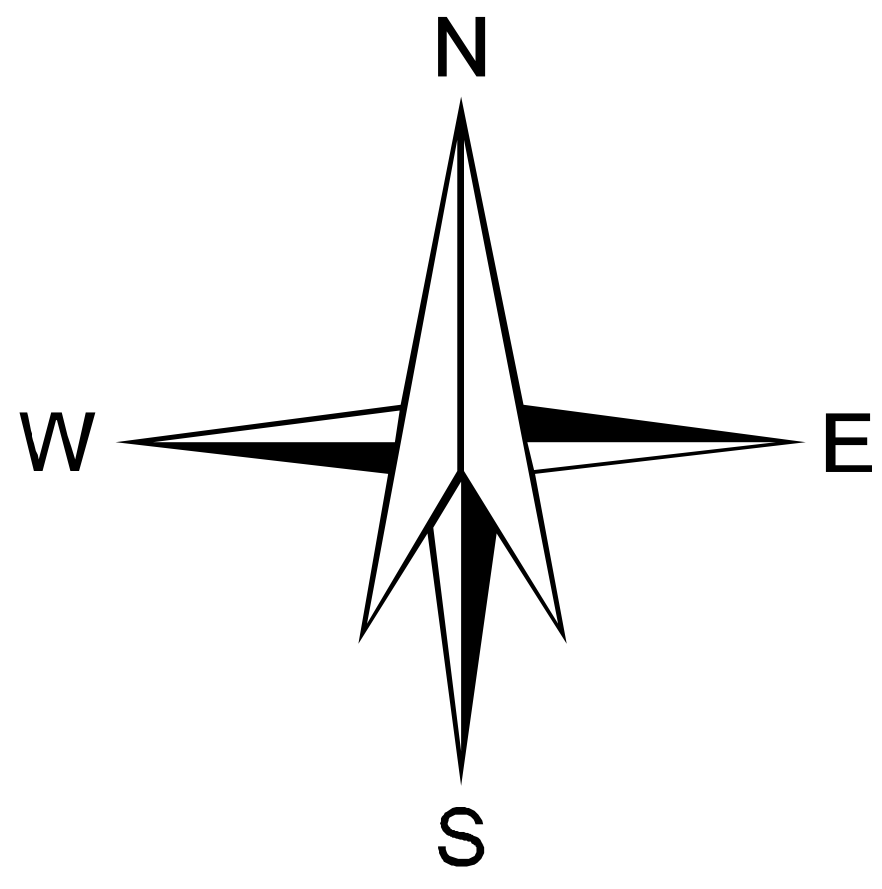


# ZONING MAP MARLBORO TOWNSHIP



- |   |         |   |
|---|---------|---|
| <span style="color: red;">■</span>        | C1      | Village Commercial District                         |
| <span style="color: pink;">■</span>       | C2      | Neighborhood Commercial District                    |
| <span style="color: lightpink;">■</span>  | C3      | Community Commercial District                       |
| <span style="color: lightcoral;">■</span> | C4      | Regional Community District                         |
| <span style="color: lightcoral;">■</span> | C5      | Community Commercial District II                    |
| <span style="color: lightcoral;">■</span> | CS      | Commercial Service District                         |
| <span style="color: lightcoral;">■</span> | FRD     | Flexible Residential District                       |
| <span style="color: lightcoral;">■</span> | FSC     | Flexible Senior Citizen District                    |
| <span style="color: lightcoral;">■</span> | IOR     | Industrial - Office - Research                      |
| <span style="color: lightcoral;">■</span> | LC      | Land Conservation District                          |
| <span style="color: lightcoral;">■</span> | LI      | Light Industrial Zone District                      |
| <span style="color: lightcoral;">■</span> | MFD     | Multifamily District                                |
| <span style="color: lightcoral;">■</span> | MFD I   | Multifamily District I                              |
| <span style="color: lightcoral;">■</span> | MFD II  | Multifamily District II                             |
| <span style="color: lightcoral;">■</span> | MFD III | Multifamily District III                            |
| <span style="color: lightcoral;">■</span> | MFD IV  | Multifamily District IV                             |
| <span style="color: lightcoral;">■</span> | MHD     | Mobile Home Park District                           |
| <span style="color: lightcoral;">■</span> | MHD II  | Mobile Home Park District II                        |
| <span style="color: lightcoral;">■</span> | OPT1    | Office Prof. Transitional District I                |
| <span style="color: lightcoral;">■</span> | OPT2    | Office Prof. Transitional District II               |
| <span style="color: lightcoral;">■</span> | PAC     | Planned Adult Community District                    |
| <span style="color: lightcoral;">■</span> | PAC II  | Planned Adult Community District II                 |
| <span style="color: lightcoral;">■</span> | PAC III | Planned Adult Community District III                |
| <span style="color: lightcoral;">■</span> | R1.5    | Residential District                                |
| <span style="color: lightcoral;">■</span> | R10AH   | Residential District                                |
| <span style="color: lightcoral;">■</span> | R20     | Residential District                                |
| <span style="color: lightcoral;">■</span> | R20/15  | Residential District                                |
| <span style="color: lightcoral;">■</span> | R20AH 1 | Residential District                                |
| <span style="color: lightcoral;">■</span> | R20AH2  | Residential District                                |
| <span style="color: lightcoral;">■</span> | R25     | Residential District                                |
| <span style="color: lightcoral;">■</span> | R30/20  | Residential District                                |
| <span style="color: lightcoral;">■</span> | R40/30  | Residential District                                |
| <span style="color: lightcoral;">■</span> | R40AH   | Residential District                                |
| <span style="color: lightcoral;">■</span> | R40G AH | Residential District                                |
| <span style="color: lightcoral;">■</span> | R60     | Residential District                                |
| <span style="color: lightcoral;">■</span> | R60/15  | Residential District                                |
| <span style="color: lightcoral;">■</span> | R60/40  | Residential District                                |
| <span style="color: lightcoral;">■</span> | R80     | Residential District                                |
| <span style="color: lightcoral;">■</span> | RSC     | Senior Citizen Residential District                 |
| <span style="color: lightcoral;">■</span> | RSCS    | Senior Citizen Residential & Single Family District |
| <span style="color: lightcoral;">■</span> | SCMFD I | Senior Citizen Multifamily District I               |
| <span style="color: lightcoral;">■</span> | SCPR    | Stream Corridor Preservation Residential District   |
| <span style="color: lightcoral;">■</span> | THD     | Townhouse District                                  |
- Zoning 2019 Amendment Layer**
- |                                       |      |                                 |
|---------------------------------------|------|---------------------------------|
| <span style="color: green;">■</span>  | A/LC | Agriculture / Land Conservation |
| <span style="color: purple;">■</span> | CF   | Community Facilities            |
| <span style="color: blue;">■</span>   | GH-1 | Generational Housing 1          |
| <span style="color: blue;">■</span>   | GH-2 | Generational Housing 2          |
| <span style="color: blue;">■</span>   | GH-3 | Generational Housing 3          |
| <span style="color: blue;">■</span>   | GH-4 | Generational Housing 4          |
| <span style="color: blue;">■</span>   | GH-5 | Generational Housing 5          |
| <span style="color: blue;">■</span>   | GH-6 | Generational Housing 6          |
| <span style="color: blue;">■</span>   | GH-7 | Generational Housing 7          |
| <span style="color: blue;">■</span>   | GH-8 | Generational Housing 8          |
| <span style="color: green;">■</span>  | ROS  | Recreation and Open Space       |

## Zoning Map

Township of Marlboro  
Engineering Department  
Geographic Information System

Greg Valesi, PE, PP, CME, Township Engineer	1979 Township Drive, Marlboro, New Jersey, 07746
Dean Staknys, PE, Assistant Township Engineer	Phone: (732) 536-0200
Steven Gottlieb, PP, LLA, Zoning Officer	Fax: (732) 972-7697

New Jersey State Plane Coordinate System  
North American Datum 1983/92  
North American Vertical Datum 1988

Photography Date: Winter 2008/2009  
Photography Scale: 1"=660'

Date: 8-25-2011	Output Size: E	Drawn By: C. Brady
Last Revised: 02-27-2023	Scale: 1" = 1400'	Revised By: S. Gottlieb
		File: Marlboro_Zoning_Map.mxd

BASEMAP COPYRIGHT, 1997, 2003 COUNTY OF MONMOUTH