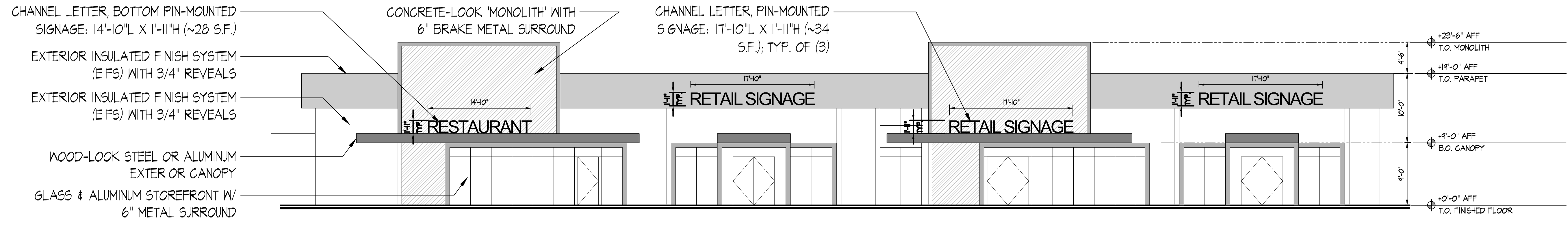


1 GROUND FLOOR PLAN - BUILDING #1  
SCALE: 1/8"=1'-0"



2 ELEVATION - RT. 9 (EAST) FACADE - BUILDING #1  
SCALE: 1/8"=1'-0"

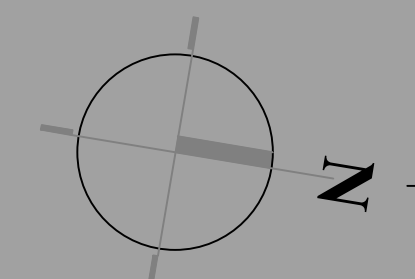
KSD PROJECT #: 20077

NO.	DESCRIPTION	DATE

**ksd**  
architects  
Kamlesh Shah Designs, Inc.  
New Jersey 13115  
New York 024015-1  
Maryland 14495

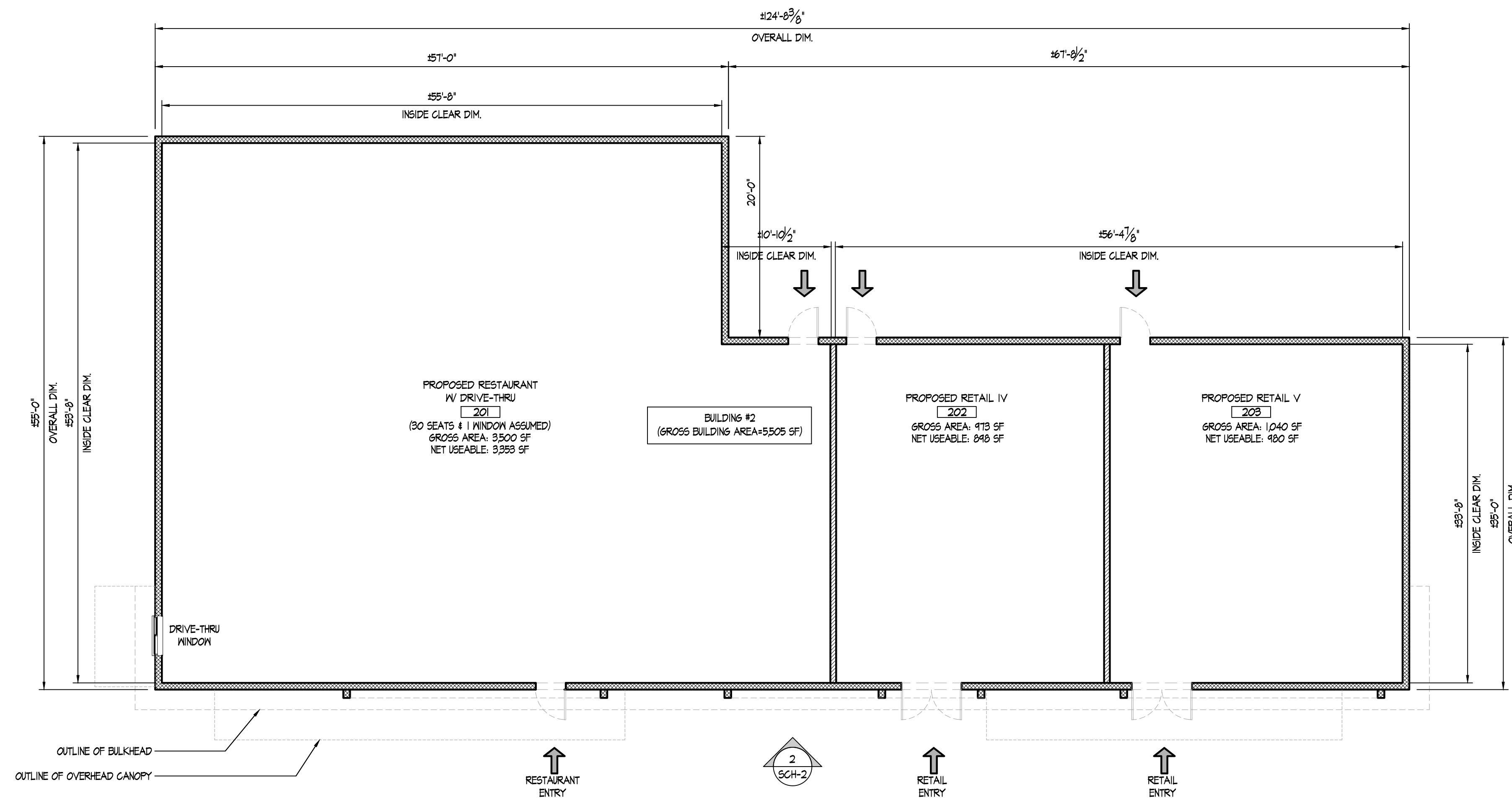
# 405 Route 9 LLC - Retail/Restaurant Development

NJSH Route 9 • Marlboro, N.J.

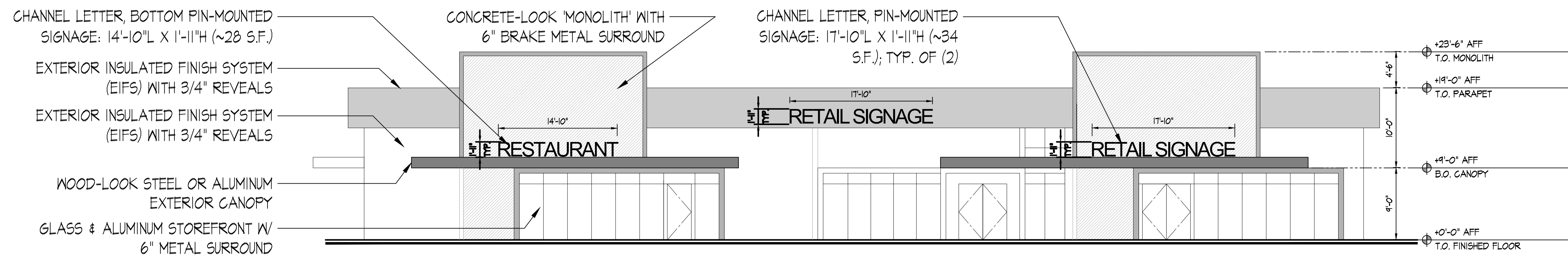


**SCH - 1.0**

December 15, 2020



1 GROUND FLOOR PLAN - BUILDING #2  
SCALE: 1/8"=1'-0"



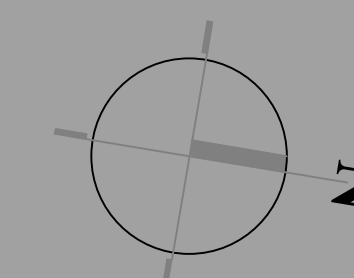
2 ELEVATION - RT. 9 (EAST) FACADE - BUILDING #2  
SCALE: 1/8"=1'-0"

KSD PROJECT #: 20077

NO.	DESCRIPTION	DATE

# 405 Route 9 LLC - Retail/Restaurant Development

NJSH Route 9 • Marlboro, N.J.



SCH - 2.0

December 15, 2020